

---

# VMS Recording Service USER MANUAL

---

Version : 1.5.0

The CD of this package includes manuals and installation files.

---

## Table of content

---

<b>1. Installation</b> .....	3
1.1. Recording Service Installation.....	3
<b>2. Run</b> .....	5
2.1. Run Recording Service .....	5
<b>3. Settings</b> .....	5
3.1. Recording Service Manager.....	5
3.1.1. Software Information .....	5
3.1.2. License Registration.....	5
3.1.3. Service Settings.....	6

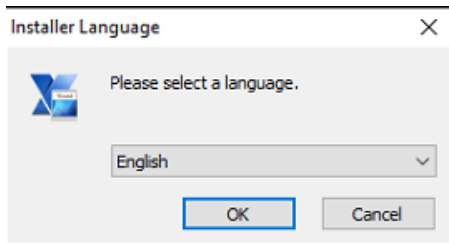
---

# 1. Installation

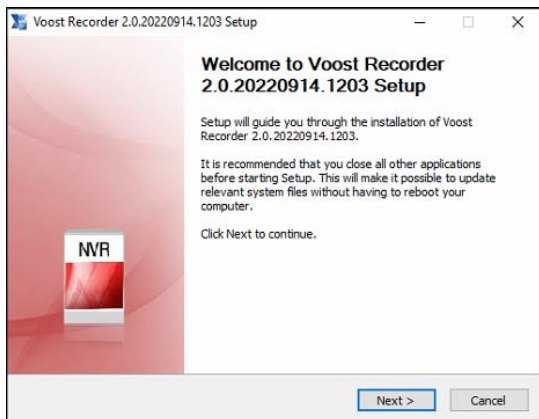
## 1.1. Recording Service Installation



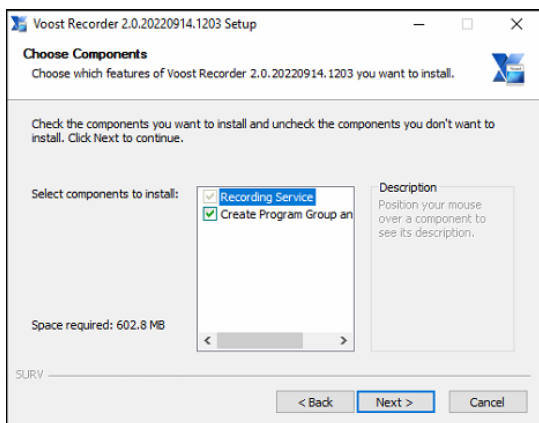
Double-click the installation file to start the installation.



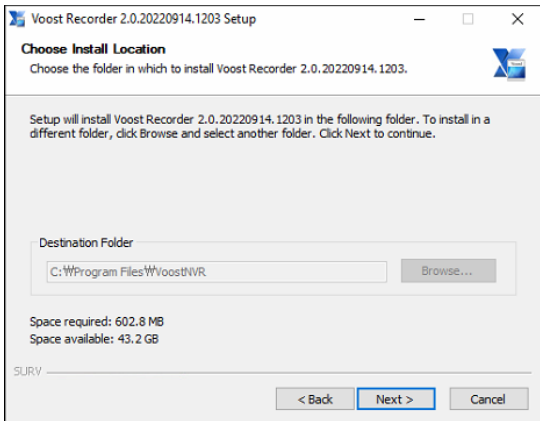
Select a language and click OK..



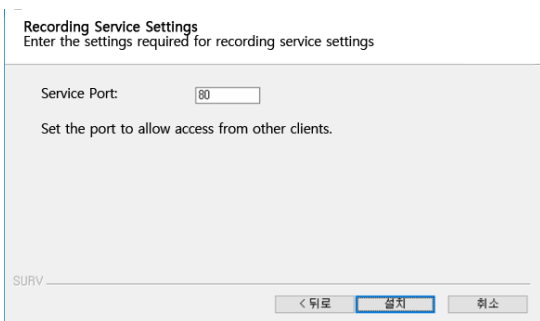
Click Next.



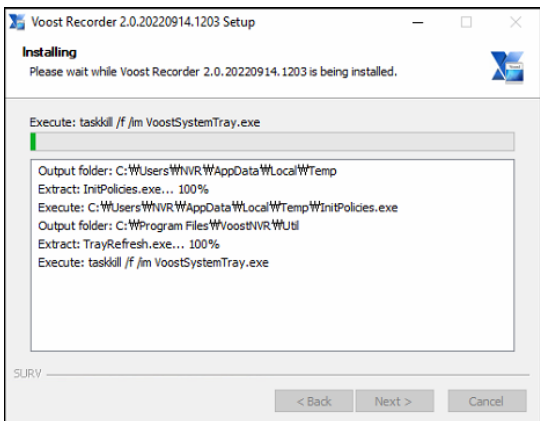
Choose the components to install and click Next.



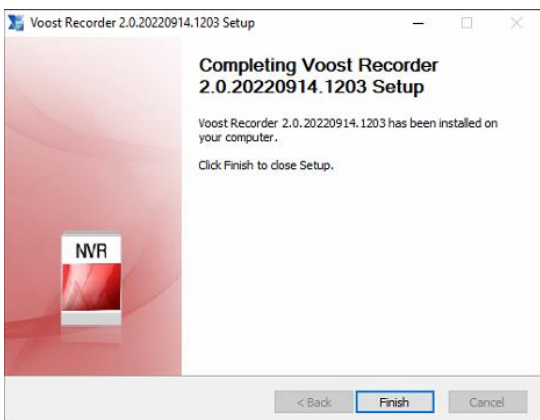
Choose the location to install Recording Service.



Enter Service port used in Recording Service.



Installation in progress.



Click Close when installation is complete.

## 2. Run

### 2.1. Run Recording Service

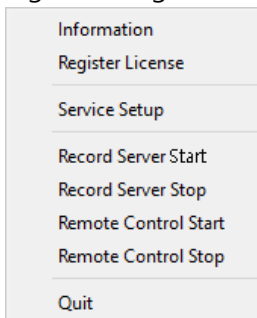
When the Recording Service is installed, it is automatically executed and can be controlled through the Recording Service manager program.

## 3. Settings

### 3.1. Recording Service Manager



Right clicking the Recording Service Manager tray icon will show you the menu below.

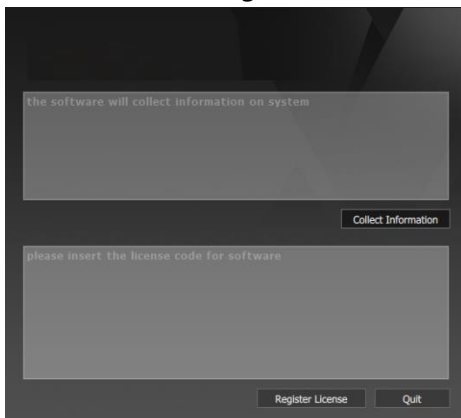


#### 3.1.1. Software Information



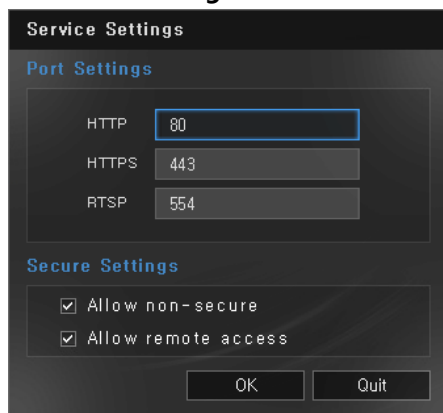
Select Software Information to view Program name, Version and License.

#### 3.1.2. License Registration



Select License Registration to view the License Registration window.

### 3.1.3. Service Settings



Select Service Setting to setup Port settings and Security settings in NVR.

HTTP, HTTPS, RTSP, etc Port settings are available

Setup to allow non-secure connection and Allow remote access.

- Start Recording Server  
Starts the NVR Recording Server.  
If the check mark is visible, the recording server is active.
- Stop Recording Server  
Stops the NVR Recording Server.  
If the check mark is visible, the recording server is inactive.
- Start Remote Control  
Starts the NVR Remote Control.  
If the check mark is visible, the remote control is active.
- Stop Remote Control  
Stops the NVR Remote Control.  
If the check mark is visible, the remote control is inactive.
- Close  
Terminates the NVR Service Manager.  
\* You can always re-run the NVR Service Manager from the Programs menu